

Installation instruction do88 performance Intake system for Porsche 911 (992) Carrera

Part number: LF-160

This instruction shows how to replace the OEM intake system with do88 performance intake system.

At this type of installation we always recommend that you have mechanical experience and knowledge about safety during work on vehicles.



Parts included:

1. 1pc Right side airbox assembly
2. 1pc Left side airbox assembly
3. 1pc Right side BOV hose
4. 1pc Left side BOV hose (with small take off)
5. 1pc Right side duct to airbox hose
6. 1pc Left side duct to airbox hose
7. 2pcs 22mm hose joiners
8. Installation hardware, includes:
 - 2pcs M6x16 Screws
 - 2pcs M6x20 Flat washers
 - 4pcs M6 nyloc flange nuts
 - 2pcs Stripes 540x7,6mm
 - 1pc Hose clamp 8-16mm
 - 4pcs Hose clamps 20-32mm
 - 2pcs Hose clamp 90-110mm
 - 2pcs P-clip 54mm (for OE size intercooler pipes)
 - 2pcs P-clip 65mm (for do88 intercooler pipes)

This installation instruction are based on our installation performed on a Porsche 992 Carrera 2020. Other vehicles this product fit to might have some differences in the installation procedure.



1. In the car settings in the center screen, raise the spoiler to its top position.



3. Remove the brake light from the spoiler. Gently push a short flat screwdriver into the holes in the two marked positions and pry the light loose. Disconnect the cable and separate the cable and grommet from the spoiler.



2. Remove the plastic covers underneath the spoiler. Gently pry the three locking tabs with a screw driver.



4. Remove 2x Torx T30 on each side of the spoiler mechanism. Then remove the spoiler by pulling it upwards.



5.

- Fold down the spoiler mechanism (make sure to not pinch the brake light cable)
- Lower the door windows
- Open the front hood
- Turn ignition off and store the key at distance from the car so it don't sense the keyless function.



6.

- Disconnect the negative battery terminal. (If you skip this step, you might get fault code for the spoiler). **Important!** Do not close the front hood until the installation is completed and the battery terminal has been re-connected.



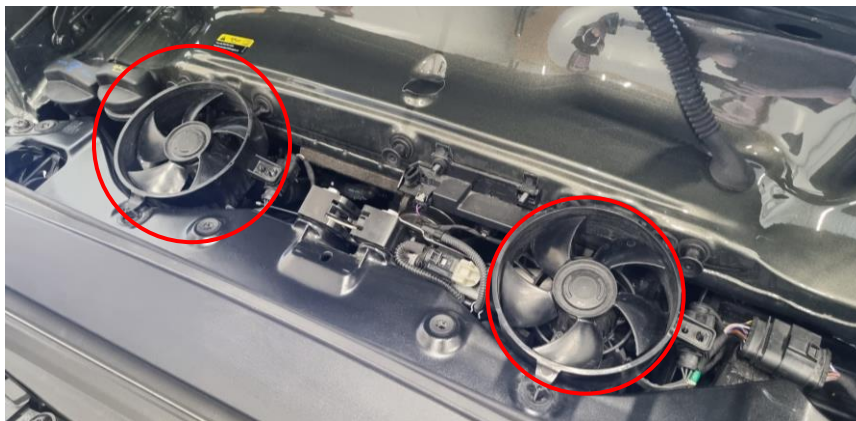
7.

- Remove both plastic covers above the rear lights.
- Remove the plastic cover above the fans. You will need to open engine oil and coolant cap. Make sure engine is cold! before doing this. (Reinstall the caps after plastic cover has been removed).



8.

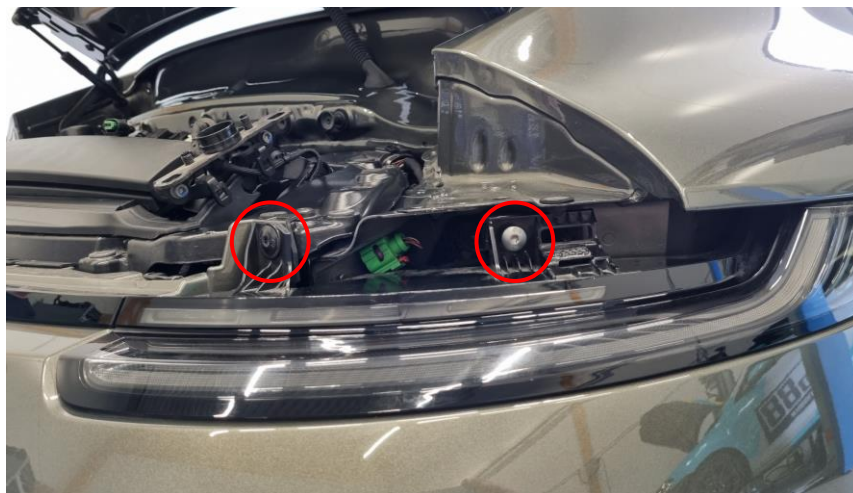
- Disconnect and remove both fans.



- 9.** Remove the large rear light. 6x Torx T30 screws.
Disconnect one cable connector on each side.



- 10.** Remove both outer rear lights. 2x Torx T30.
Disconnect the cable connectors.



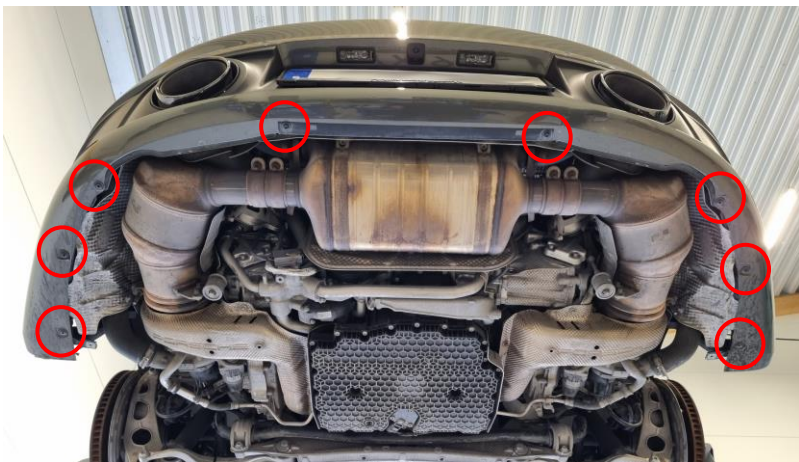
- 11.** Jack up the car safely and remove both rear wheels.



- 12.** Remove the rear inner wheel arch plastic on both sides. 1x Torx T30 / 4x Torx T25 / 1x Hex 10mm plastic nut.



- 13.** Remove 8x Torx T30 located in the bottom of the rear bumper cover. For installation purpose, note that the two in the middle has different threads.



- 14.** Inside each rear wheel housing remove 3x Torx T30 that holds the rear bumper. The upper of these three screws is hidden behind the wheel arch plastic.



- 15.** Remove 2x Torx T30 located top center of the rear bumper cover.



- 16.** Remove the final two screws for the rear bumper cover located in the space for the rear lights. 1x Torx T30.



- 17.** Disconnect the left and/or right cable connectors for the rear bumper. Number of connectors depends on equipment installed in the car.



- 18.** With the help of a friend gently pull the rear bumper wheel arch corners outwards and then remove the rear bumper.



- 19.** Remove the spoiler mechanism. 4x Torx T45 and 1x cable connector.



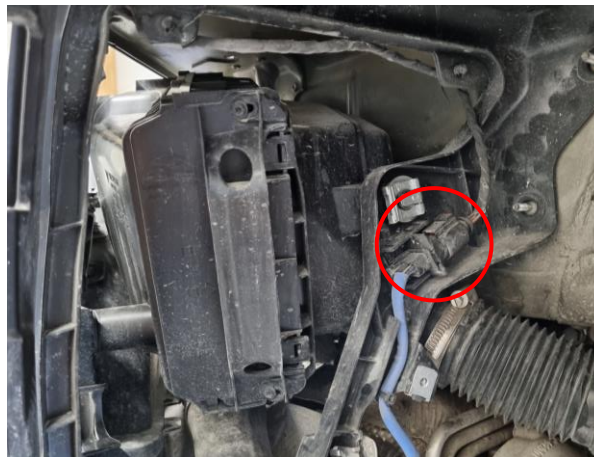
- 20.** On both sides remove the two air ducts.



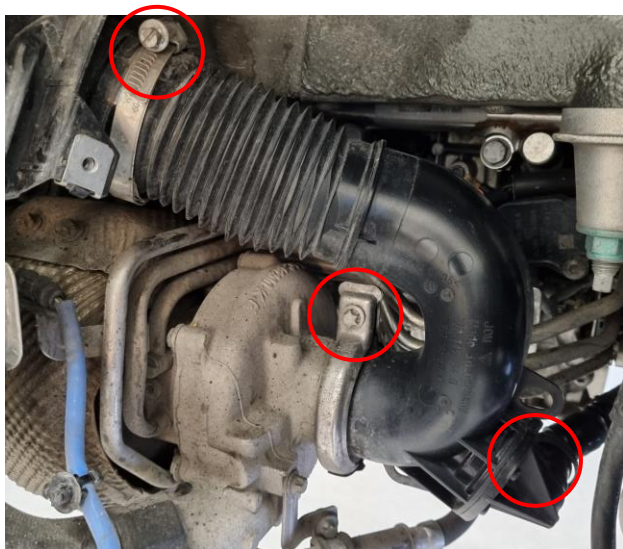
- 21.** Remove four screws that holds the heat shield.
4x Torx T25.



- 22.** Disconnect the oxygen sensor cable connector and gently pry the cable clips free from the plastic cage.



- 23.** Remove the turbo inlet duct. 1x hose clamp, 1x Torx E10 (V-band), breather hose (right side only)



- 24.** Loosen the turbo outlet hose clamp.



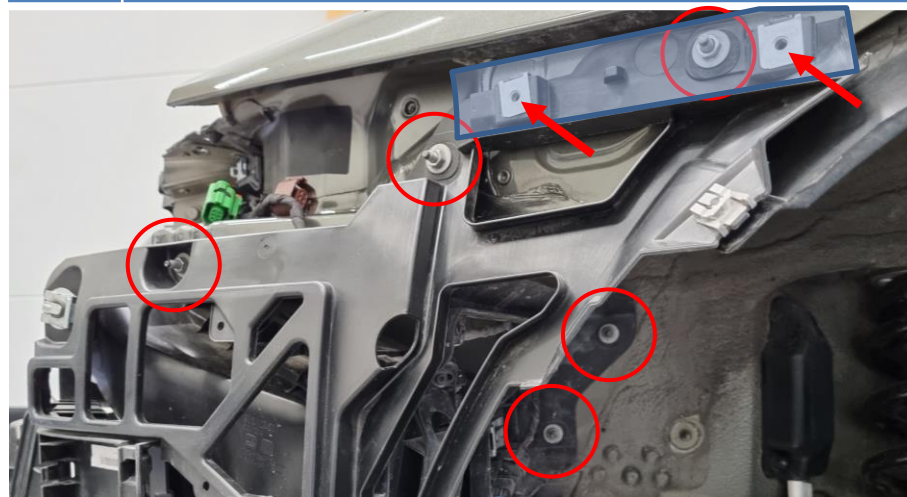
- 25.** Remove the intercooler inlet hoses and the BOV hoses from air boxes.



- 27.** Remove 1x Torx T30 / 10mm Hex Screw.



- 26.** Remove 2x Torx T30 and remove the bumper cover holder that sits in the area marked with blue. Then remove 5x Hex 10mm nuts for the plastic cage.



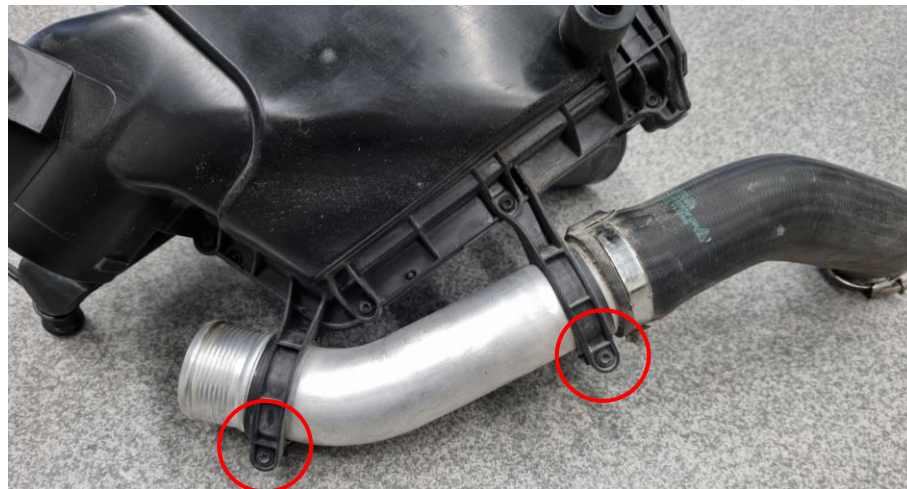
- 28.** Now remove the entire plastic cage. On the right side you need to disconnect the vacuum line. Do this in the joint in between the plastic pipe and the rubber hose.



29. Remove the air filter box from the plastic cage.
3x metal clips.



30. Remove the charge pipe from the air filter box.
2x Torx T25.



31. Reinstall the charge pipe in the car.



32. On the right side only swap position on the vacuum line clips and position them according to photo.



Step 34-38 is only needed if you have bought this kit together with the larger do88 upgrade turbo inlet hoses.

- 33.** Install the included BOV hose. Join the new hose with the included aluminum joiner and hose clamp. On the right side also attach the vacuum line to the new BOV hose and secure with clamp.



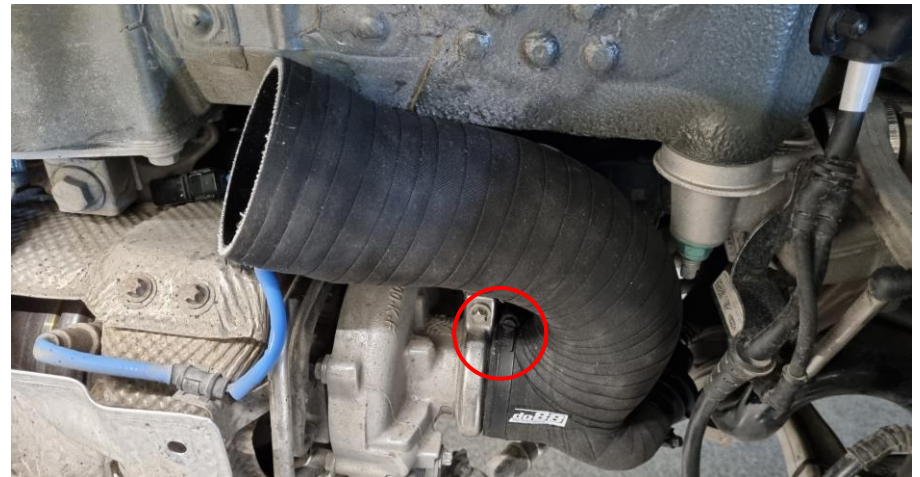
- 34.** Install the included O-rings on the V-band hose adapters.



- 35.** Gently install them in turbochargers and fasten them with the original V-band clamps.



- 36.** Install the inlet hose. Tighten the included 60-80mm / 9mm wide hose clamp loosely so the hose still can rotate on its connection.



- 37.** On the right side you need to disconnect the lower clips for the breather valve hose.



- 38.** On the right side mount the breather hose to the breather valve.



- 39.** Install both the carbon fiber air filter boxes.
1. Position the included hose clamps on the BOV and turbo inlet hose.
 2. Suspend the carbon fiber air box bracket on the top screw and slide on the hoses*.
 3. Install the (small for OE or large for do88) included P-clip to the charge pipe and the air filter box bracket. Fasten with the included M6x16 screw and M6 nut.

* If you are installing this Intake system with the original plastic turbo inlet ducts you need to gently heat the plastic with a heating gun and lubricate the inside with WD-40 before pushing them on the airbox aluminum fitting.



40. Install the plastic fresh air duct to the included square shaped silicone hose at the airbox inlet. Fasten with a hose clamp on the air box side only.



41. Strap the BOV hose and vacuum line (right side only) with the included zip-tie around fresh air duct. Make sure the zip-tie is placed where the aluminum joiner is.



42. Reinstall the plastic air filter housing cage. Align the carbon fiber air filter housing so you have a few millimeters of clearance around the air filter housing. You may need to loosen the M6 Screw/nut for the large round bracket to adjust the rotation of the airbox. Finally install the included M6 washer and M6 Nut and then tighten all hose clamps. Tighten the BOV recirculation hose to maximum 3Nm. Reinstall all other parts in reverse order.

